



# RCEC

## Rohingya Community Educare Center



A collaborative effort by non-governmental organisations to establish an exemplary educare center for Rohingya community in Malaysia.





“

And let there be [arising] from you a group of people inviting to [all that is] good, enjoining what is right and forbidding what is wrong, and those will be the successful.

[Quran Ali 'Imran (3) : 104]

# Table of Contents

---

Welcome Message		
1.0	Introduction	6
2.0	RCEC Establishment	9
3.0	Teaching & Learning Activities	14
4.0	Supporting Programs	19
5.0	Community Participations	21
6.0	Forward Planning	26
7.0	How To Contribute	27





# Welcome Message

---



*Mohd Jamil Mohd Muda  
Manager  
Rohingya Community Educare Center (RCEC)  
Seri Kembangan*

It is a great opportunity for us to be involved in this noble project to provide education for future generations!

The United Nations has declared Rohingya as the most persecuted community in the world. Inevitably, they have to seek refuge in foreign lands to save their families albeit experiencing worst kinds of tribulation and threat. But what the future holds?

We believe that veritable education is the foundation for their struggles to blend into the new world, and more importantly to raise future generations.

RCEC aims to provide an integral education and training center for the Rohingya community to adapt the norms and rules in Malaysia. This, at first, will alleviate negative perceptions that make them rebuffed by the locals. It also

prepares Rohingya children with basic education that is not inferior to the ones adopted by developed nations, to arm them with adequate foundations whatever their future status might be.

Through smart partnerships and profound efforts, RCEC will continue to form a refenced model for strategic steps to resuscitate the Rohingya.

I appreciate the noble efforts from HALUAN and NAMA Foundation, and sincere participations from all parties to instigate the realisation of this dream.

There is still a long journey ahead, and RCEC will need undivided commitments from everyone. Our door is always open for your suggestions, helps and enquiries.

# 1.0 Introduction

---

## 1.1 The Plight of the Rohingya

Being called the world's most persecuted minority, the Rohingya form the largest single group of stateless people in the world, with no legal rights in their own homeland.

The Rohingyas are a Muslim people in a Buddhist-majority country. Some Rohingya can trace their ancestry in Rakhine state back hundreds of years, to a time when it was an independent kingdom called Arakan (and Sittwe was called Akyab). Myanmar's 1982 citizenship law has deprived their citizenship, denying all basic rights that affect all aspects of everyday life.

They have been subject to decades of discrimination and violence in the western Myanmar state of Rakhine.

This culminated in the wholesale ethnic cleansing of the Rohingya from the state capital of Sittwe in 2012, after which about 140,000 of them were forced into squalid refugee camps.

In recent military offensive operations, Rohingya villages have been razed and families are separated. More than 25,000 were killed and thousands of women and girls were sexually assaulted.

Risking death by sea or on foot, more than 700,000 Rohingya have fled to Bangladesh, settling in refugee camps. Many other have taken further hazardous journeys to Southeast Asia, including Malaysia.



*Boys stand among debris after fire destroyed shelters at a camp for internally displaced Rohingya Muslims in the western Rakhine State near Sittwe, Myanmar.*

## 1.2 Rohingya in Malaysia

Refugees fleeing war or persecution are often living in a very vulnerable situation. The Rohingya have been seeking refuge in Malaysia since the 1980s. As of end January 2019, UNHCR recorded some 84,030 Rohingya taking refuge in the country. There could be another 50,000 to 60,000 who arrived illegally and did not have official refugee status. While a large number of Rohingya children are born in this country.

They typically live within the local community in full of

fears, as invisible as they could. Thus, their children are not able to access to formal education system and many adults remain illiterate. About 70% of Rohingya children in Malaysia are out-of-school and there is a considerable lack of awareness for education among Rohingya parents communities.

Some fortunate Rohingya children have the opportunity to attend learning centres run by NGOs and UNHCR, and also in madrasahs that teach only religious subjects.



Malaysia has not ratified the 1951 Convention Relating to the Status of Refugees or its 1967 Protocol. Refugees are allowed to stay in Malaysia on humanitarian grounds while waiting to be repatriated to a third country.

## 1.3 Why We Cannot Ignore the Rohingya

Compromising their basic human needs present vulnerable threats to the society, and they may end up on the streets or exploited, living in a form of quasi-legal limbo and dependent on handouts. Anxiety and poor living conditions may lead to crimes and other social ills, and confrontations.

With little political improvements in their homeland, the Rohingyas will most probably will go on living in this country for the next few decades. Thus, we must help them to adapt and integrate in cohesive and productive manners. That must begin with the right education at all levels.

## 1.4 RCEC Education Model

RCEC is established to deliver an integrated educational and social centre with emphasis on three main functions:

1. Primary schooling for Rohingya children, with basic education in preparation for opportunity to proceed to a higher level education,
2. Parents engagement and community outreach through programs such as health screening, parenting courses, and language classes, and
3. Capacity building for Rohingya community, including skill training especially for educators from other Rohingya religious-based schools or madrasah.

Besides maintaining the priority to teach al-Quran and religious subjects, RCEC also provides mainstream subjects including Bahasa Malaysia, English, Burmese, Mathematics, Science, and Arts, with the aim for formal qualification tests or examinations.

With some adaptations, we aim to replicate this model to other places in Malaysia that have become adopted homes for the Rohingya community.



*Rohingya parents engagement and community outreach through free health screening program.*

## 1.5 Recognition by the UNHCR

The establishment of RCEC has been recognised by The Office of the United Nations High Commissioner for Refugees (UNHCR) through its certification of HALUAN as an implementation partner. HALUAN is entrusted to be an advisor for other Rohingya schools in Malaysia.

RCEC is also coordinating local volunteers, from amongst professionals and university students, to help adopting adjusted version of RCEC's system and syllabus at other schools.



## 2.0 RCEC Establishment

RCEC was established in October 2017 in Seri Kembangan, Selangor. It is an initial collaborative effort between Organization of Graduates of Educational Institutions Malaysia (HALUAN), NAMA Foundation and the Arakan Rohingya Council (ARC).



### HALUAN

HALUAN is a Malaysian NGO established in 1988. They are responsible on initial data collection and setting up the infrastructure, besides administrative and operational aspects of RCEC. They are also devising and reviewing the syllabus and providing training to the teachers, and supporting related community programs.

### NAMA Foundation

NAMA Foundation, a Jeddah-based international grant provider through the empowerment of education sector and capacity building of civil society, that focusing on youth development and volunteerism. They provide the main financial supports to enable the initial two phases of RCEC operation.

### ARC

Arakan Rohingya Council is association initiated in Kuala Lumpur in 2006, focusing on the welfare of Rohingya community in Malaysia especially through collaborations with NGOs. They facilitate data collections and social relations with Rohingya community in Malaysia, helping to gain trust and convince them the importance of RCEC.

### 2.1 Objectives

1. RCEC aims to provide an effective avenue for the Rohingya community, especially their future generations, to gain education, knowledge and skills that enable them to
  - ✓ nurture a well-balanced community in terms of spiritual, physical and mental based on Islamic values,
  - ✓ live in harmony amongst Malaysian society,
  - ✓ adapt, respect and abide Malaysian cultures, norms and regulations,
  - ✓ alleviate their living conditions that eventually make them competent enough to participate in socio-economics development of Malaysia, and
  - ✓ prepare for their better futures.
2. RCEC will open opportunities for all kind-hearted persons or groups to help Rohingya community in various forms of volunteerism.

## 2.2 Vision



To become a reference model for humanitarian community educare system that produce educated and competent persons.

## 2.3 Mission



To equip Rohingya community with excellent Islamic values, as well as education, knowledge and skills to ensure they blend well into the Malaysian society and prepare a strong foundation for their future.

Our mission would be realised through the following actions:

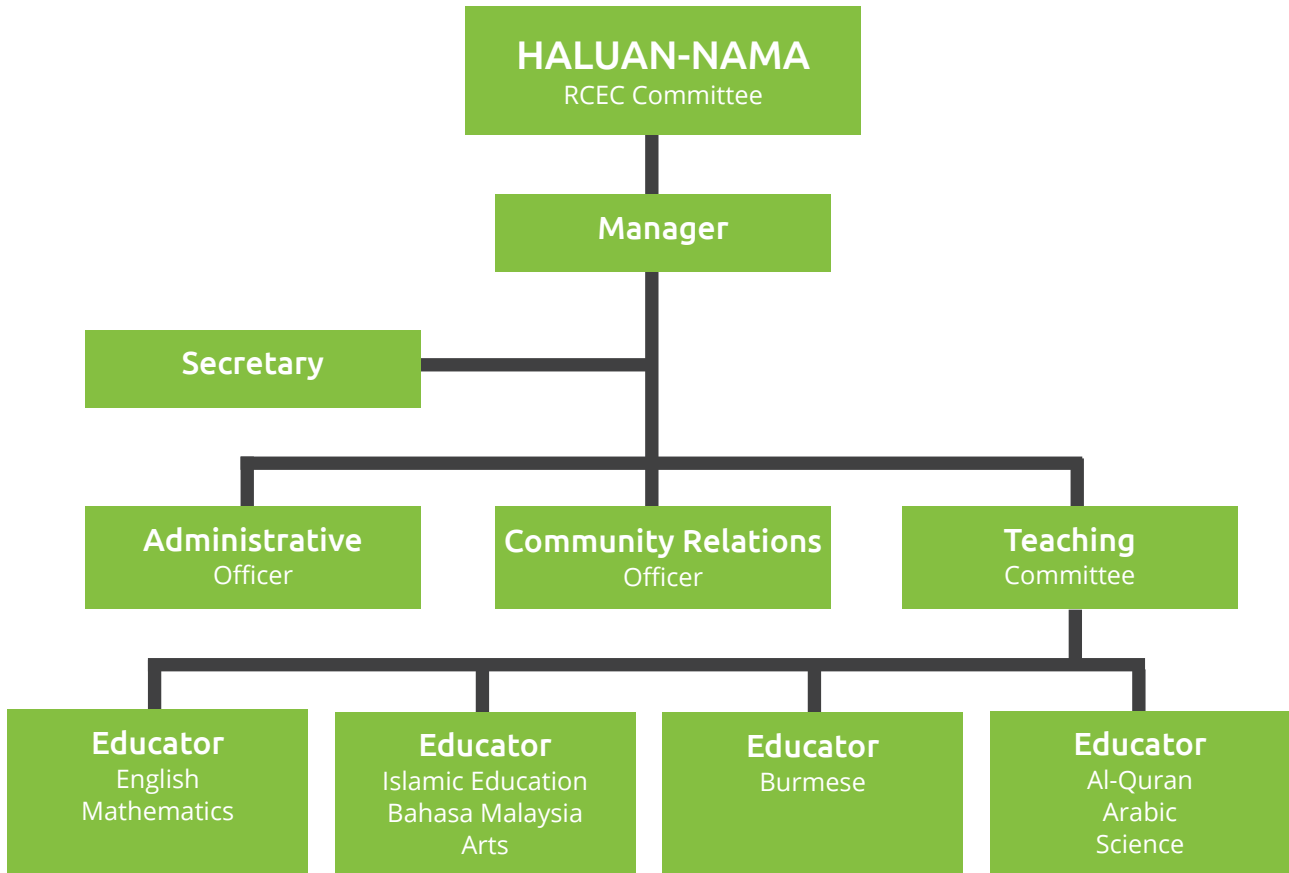
1. Prioritising universal Islamic values in all activities,
2. Providing academic, character and leadership excellence for Rohingya future generations,
3. Nurturing positive-minded families through parenting programs,
4. Developing teaching skills for teachers in Rohingya religious-based schools,
5. Providing communication and vocational skills for Rohingya workers,
6. Educating Rohingya mothers with skills and creativities to sustain their families, and
7. Conducting social integration programs the help the Rohingya community interact with the locals and not let themselves be marginalised, and the local community accept them as part of the growing society.

## 2.4 Core Values



RCEC cherishes good-morality values including law-abiding and compliant, independence, non-discriminate, respect, professionalism, teamwork and accountability.

## 2.5 The Organisation Structure



Senior management from HALUAN and NAMA Foundation attended the opening ceremony of RCEC in October 2017.

## 2.6 Implementation Milestones

Initial discussion between HALUAN ✓  
and NAMA Foundation to propose  
an education system for Rohingya  
community in Malaysia.

**January  
2017**



Comprehensive data collection on ✓  
Rohingya community with assistance  
from ARC, to identify prospective  
students.

**June  
2017**



**September  
2017**

- ✓ Partnership Agreement between HALUAN and NAMA Foundation to implement the project.
- ✓ Identifying and procuring the infrastructure and classrooms.
- ✓ Appointing the management team and recruiting teachers.
- ✓ Training for teachers.

Commencement of operation and ✓  
teaching classes at 5th Floor of 3  
Elements building, Seri Kembangan,  
with 35 students.

**October  
2017**

Opening ceremony by a delegation ✓  
led by the Chairman of NAMA Board  
of Trustees, Saleh Salem A Bin  
Mahfouz.



✓ Commencement of English classes for adult Rohingya.

**January 2018**

✓ HALUAN and RCEC visit to UNHCR Kuala Lumpur office.

✓ Expansion of school space, with opening of 4th floor of 3 Elements building.

**May 2018**



**December 2018**

✓ Inception of annual Rohingya motivational camps in Pahang, Terengganu, Kedah, Pulau Pinang and Selangor.



✓ UNHCR recognition of RCEC through assigning HALUAN as its "Implementing Partner".

**March 2019**

✓ UNHCR attested RCEC as an alternative learning center for refugee children.

**June 2019**

## 3.0 Teaching & Learning Activities

At the initial phase, 30 Rohingya children ages four to 12 years old are registered at RCEC. Five trained teachers are assigned to teach them Bahasa Malaysia, English, Mathematics, Burmese, Islamic Knowledge, Qur'an, Arts and Science.

At the same time, RCEC also focuses on English proficiency lessons for Rohingya adults and youths. Additionally, RCEC conducts basic knowledge classes for the parents of the students, to teach reading, spelling and writing, as well as parenting skills.

### 3.1 Schooling for Children

Students are taught an adapted version of the Malaysian formal curriculum with the aim to develop opportunity to proceed to a higher-level education.

#### School Languages

- > Bahasa Malaysia
- > English

#### Schooling Days

- > Monday to Friday.
- > School holidays adopt the official Malaysian national calendar.

#### Schooling Hours

- > 9:00 am – 4:00 pm for Monday to Thursday
- > 9:00 am – 12:30 pm for Friday

#### Co-curricular Activities

- > Smartkids Program to teach moral and Arabic.
- > Classes to properly perform solat and memorize al-Quran.

#### Syllabus

- > Bahasa Malaysia
- > English Language
- > Burmese Language
- > Mathematics
- > Islamic Studies
- > Quranic Studies
- > Physical Training
  
- > Arts education is introduced as an optional subject.
  
- > *All subjects are in compliance with The New Primary School Curriculum (KBSR).*
  
- > *Students are distributed based on intelligence quotient (IQ) assessments.*
  
- > *Transportation, breakfast and lunch are provided by RCEC.*



### 3.2 Auxiliary Classes for Rohingya Youths and Community

RCEC also serves as a learning center for the youth to acquire basic skills. At the initial stage, RCEC conducts the following classes:

1. Weekly English and Malay Language classes which are conducted by Rohingya youths themselves and being guided by RCEC and HALUAN.
2. Weekly communication classes for Rohingya community within the area, conducted by volunteers from HALUAN and international students from International Islamic University Malaysia (IIUM).
3. On-demand vocational skill classes for workers amongst Rohingya community, including safety and health procedures.



### 3.3 Classes and Workshops for Parents

It is critical to ensure the parents share the same ambitions and believe towards the education for their children. To address the issue, RCEC conducts monthly parenting program that will serve the following purposes:

1. Creating better bonding between RCEC and parents,
2. Giving advice to parents about the importance of education to their child, and
3. Creating awareness to female teenagers about importance of education and personal health and hygiene.





### 3.4 Training Programs for Rohingya School Teachers

RCEC organises workshops and meetings to train teachers from Rohingya religious-based schools or madrasah. At the early stage, they will learn methodology

and teaching skills. RCEC plans to conduct advanced courses should this effort received good feedback from the teachers.



### 3.5 Rohingya Motivational Camp

The camp is carried out as a data collection and evaluation effort to identify the status of main Rohingya community in Pahang, Terengganu, Kedah, Pulau Pinang and Selangor. Besides introducing new experience to the students, this camp also brought an opportunity for the local volunteers to get involved with RCEC program.



# 4.0 Supporting Programs

---

With strong cooperations from HALUAN and other local institutions, RCEC conducts parents engagement and outreach program for Rohingya community including free health screening and health education sessions.

## 4.1 Parents Engagement

Several initiatives have been organized by RCEC to increase the parents engagement in the education of their children, in hope that there will be more awareness among the parents on the importance of education.



## 4.2 Outreach Programs

Through outreach programs, volunteers together with RCEC teachers visit student family houses, to share information regarding cleanliness and hygiene care especially for the students and women or girls.

RCEC also creates awareness and educates female youths regarding the importance of education, in order to improve their future and be part of the community leaders.



# 5.0 Community Participations

---

RCEC has increasingly become an option for Malaysian and international community to make contributions towards empowering the Rohingya.

## 5.1 Social and Cultural Gathering

Several initiatives have been organized by RCEC to increase the parents engagement in the education of their children, in hope that there will be more awareness among the parents on the importance of education.



20 November 2017 : Humanity Night at International Islamic University Malaysia.



8 July 2018 : Hari Raya Celebration at HALUAN Headquarters in Bangi. Nine RCEC's pupils made a performance.



6 April 2018 : Sinar for Rohingya campaign at Karangkrif in Shah Alam where eight RCEC's pupils delivered a performance.



7 June 2018 : A collective Ramadan Iftar program with parents and nearby Rohingya community at RCEC in Seri Kembangan.



3 Jan 2019: Pupils from RCEC joined the 31st Rohingya National Day celebration program at Elom Empowerment, a Rohingya NGO based in Selayang.

## 5.2 Volunteering and Corporate Social Responsibility Programs



22 December 2017 : Visit by volunteers from Mercy Malaysia and UNHCR to promote hygienic and healthy food.



14 April 2018 : Educational activities organised by students from Kelab Sukarelawan Mahasiswa Perpustakaan Tun Sri Lanang, Universiti Kebangsaan Malaysia (UKM).







20 April 2018 : Educational visit and activities by students from Journalism Club of International Islamic University Malaysia (IIUM).



13 July 2018 : Social visit by representatives from Raudhatul Athfal Qurani Jakarta Timur, Yayasan Muslimin Putra Mulia and Sahabat Al-Aqsha, Indonesia.



2 August 2018 : Educational visit by students from University of Padjajaran, Bandung, Indonesia.



7 September 2018 : Educational visit by students from University of Tokyo, Japan.



25 April 2019 : Students from Universiti Teknologi Mara (UiTM) joined RCEC teachers to visit Rohingya families.

# 6.0 Forward Planning

---

The Rohingyas are stateless and have little or no hope in returning, unless some drastic political changes take place in Myanmar. No Rohingya refugees have been resettled from Malaysia so far.

They are the longest living refugees in Malaysia and will most probably go on living in this country for the next few decades.

They need to survive in the challenging world. A structured and stable learning environment equipped with the quality education and necessary tools is pivotal for them to be competitive, and to cater for their psychosocial needs. They also need a pathway that leads to skilled or technical work.

## 6.1 Financial Supports

By 2020, RCEC will have to be run independently with an annual financial requirement of RM663,700. We are seeking for corporate institutions to be part of our efforts to fulfill this commitment.

## 6.2 Improving Education Services and Facilities

RCEC has proposed to collaborate with Giat MARA and other NGOs to provide vocational training for Rohingya youths.

## 6.3 Standards Recognition

RCEC is seeking to be fully recognised by UNHCR and some levels of recognition by the Malaysian Ministry of Education.

## 6.4 Expansion and Collaboration

Within the next five years, RCEC is planning to establish new centers in Kedah, Terengganu, Pulau Pinang and Pahang, for the benefits of Rohingya community in those areas.

Strategic collaborations will be ventured to provide vocational training for the community.

## 6.5 Facilitate Volunteerism

RCEC will further facilitate voluntary activities, especially in teaching and self-improvement programs, by Malaysian society especially higher learning student groups to serve Rohingya community.

# 7.0 How To Contribute

RCEC welcome all forms of contribution, cooperation and support from the Malaysian society.

Corporate institutions are especially welcome to be part of our efforts through their Corporate Social Responsibility (CSR) programs.

## 7.1 Financial Contributions

We have also identified the following elements of RCEC's **annual budget** to ensure its sustained operation.

OPERATION ELEMENTS	BUDGET
1. RCEC Operation and Administration (building rental, utility, maintenance, salary)	RM 118,800
2. RCEC Smart-Kids (transportation, meals, uniform and stationery sets)	RM 451,900
3. Training for Teachers	RM 36,000
4. Rohingya Community Activities (language classes, parenting programs, vocational & entrepreneurial skills, activities for mothers & youths, Quranic classes, family days)	RM 57,000

*Financial contributions can be made through*

**Tabung Kebajikan dan Kemanusiaan HALUAN**  
Maybank Islamic Berhad  
Accout No. 5622 6350 2611

Online donations can be made at <https://haluan.org.my/donation>



## 7.2 In-kind Contributions

RCEC **appreciate in-kind contributions**. The center will accept basic consumables including rice, sugar, biscuits, as well as tea and cocholalte malt. We are also looking for books and stationeries.

## 7.3 Expertise and Volunteering

RCEC opens contributions for the public to share their expertise that may be useful for the Rohingya community. We welcome proposals for voluntary training and teaching programs, especially from corporate and higher learning institutions.



## Rohingya Community Educare Center

Launched in October 2017, RCEC was set out to promote innovative efforts to integrate Rohingya community in Malaysia through education. It is envisaged to become a model of independent humanitarian educare center.



### **Rohingya Community Educare Center**

13-5, 3 Elements, Persiaran Putra Permai Selesa,  
Bandar Putra Permai  
43300 Seri Kembangan  
Selangor Darul Ehsan  
MALAYSIA

**Phone :** +6 010 449 6626  
**Email :** rcecsarikembangan@gmail.com

**Facebook :** @rcecsarikembangan  
**Instagram :** @rcecsarikembangan



*May 2019 (EN)*